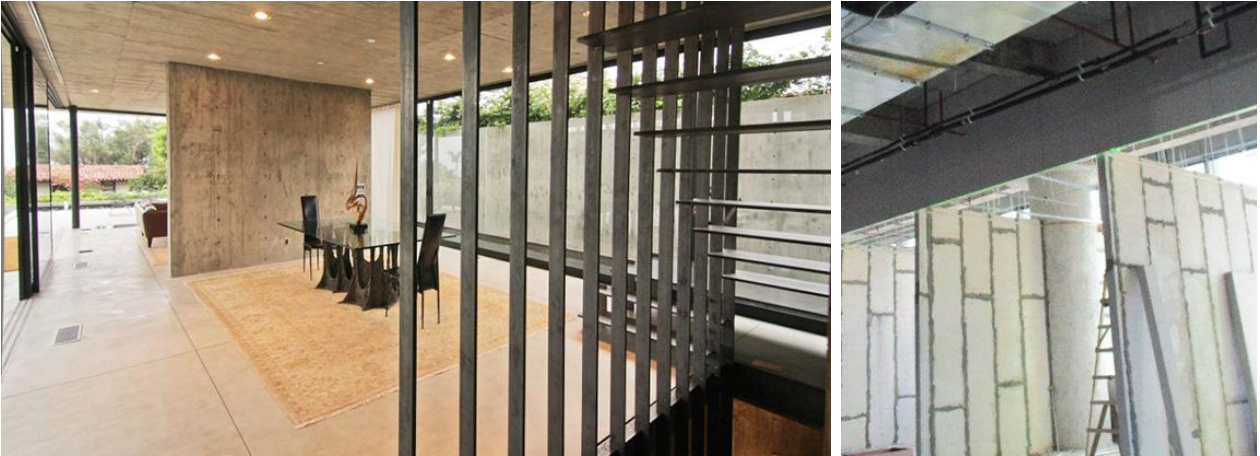


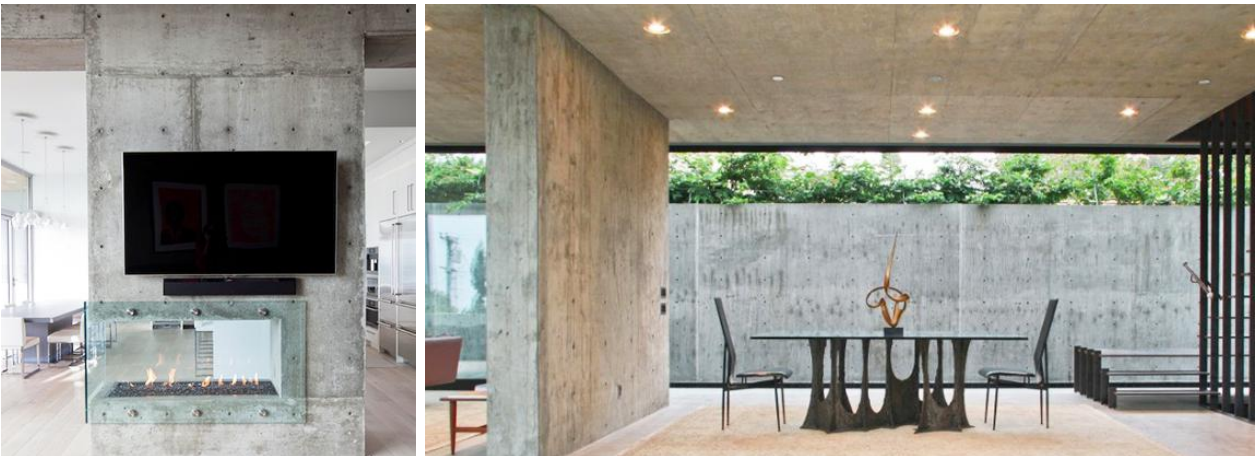
EPS-polystyrene-styrofoam-concrete-wall-room-dividers-75mm

Room dividers

A room divider is a screen or piece of furniture placed in a way that divides a room into separate areas. Room dividers are used by interior designers and architects as means to divide space into separate distinct areas.



Houses, and other residences, use eps polystyrene styrofoam concrete room dividers to divide the space more effectively or as a decorating focus point. In schools or religious facilities, room dividers primarily are used to create temporary classrooms for education in large open rooms.



Hotels and restaurants use two different types of expanded polystyrene foam cement wall dividers. Commonly, you will see floor-to-ceiling room dividers in banquet halls and meeting spaces. These fixed dividers can be used to divide a banquet room into smaller facilities.

In offices, eps foam styrofoam beads concrete room separator are typically more permanent in nature and attached directly to the floor. These eps foam styrofoam beads concrete room separator allow taking a large office space and breaking it into quieter and more focused subdivided offices.



Room dividers in Southeast Asia

In Southeast Asia, people prefer use 75mm thickness eps polystyrene styrofoam concrete room dividers, due to it can largely save the house room space area, meanwhile the soundproof performance is excellent as well.

